





CHA 007

(LRV = 76)



CHA 002

(LRV = 64)



CHA 008

(LRV = 68)



CHA 006

(LRV = 46)



CHA 004

(LRV = 40)



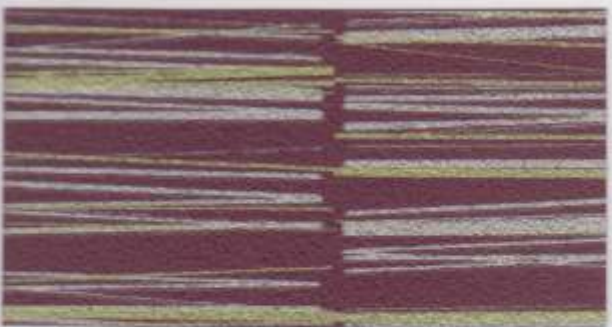
CHA 003

(LRV = 47)



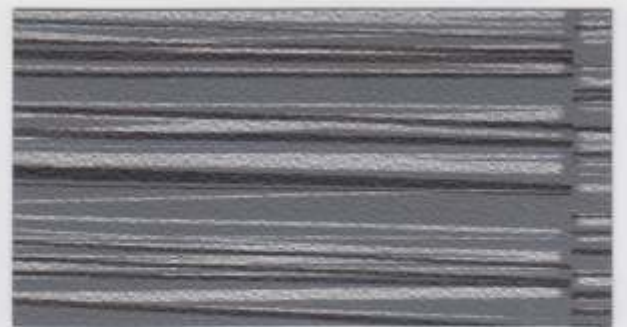
CHA 005

(LRV = 30)



CHA 010

(LRV = 25)



CHA 011

(LRV = 18)



CHA 009

(LRV = 69)



CHA 001

(LRV = 19)

# TECHNICAL INFORMATION



## Physical Properties:

Total Weight: 400g/m<sup>2</sup> (nominal)

Vinyl Weight: 310g/m<sup>2</sup> (nominal)

Substrate Type: Non Woven Fabric



## Type II and other specifications available

Substrate Weight: 90g/m<sup>2</sup> (nominal)

Tensile Strength: MD 40 N/cm (nominal)

TD 30 N/cm (nominal)

Tear Strength: 4500 mN (nominal)



## Roll Size:

130cm x 30m – cut lengths available



## Pattern Repeat:

Vertical: 530mm

Horizontal: 1220mm



## Fire Rating:

Class 'O' to the requirements of Approved Document B of the British Building Regulations (Class 1, BS476 Part 7). Euroclass B-s2,d0. Class A ASTM E-84 Tunnel Test.



## Adhesive:

Fabric backed vinyls – Newmor Heavy. Varies with substrate – please enquire.



## Bacteria Resistance:

Contains an active fungicide.



## Light Fast:

Excellent Light Fastness

BS EN ISO 105-B02 7/8.

LRV = Light Reflective Value

## Specifications:

Conforms to requirements of BS EN 15102, BS EN 259 and WA – Quality Standard W-101.

## Stain/Chemical Resistance:

Pass ASTM D-1308-1987 Federal Spot Test. Resistant to temporary staining of oils, fats, mild acids and alkalis.

## Quality Assurance:

Our management systems and production procedures comply with ISO 9001, the internationally recognised Quality Standard.

## Availability:

Every product stocked in depth. 5.00pm deadline for next day delivery. (UK only)

## Origin:

Designed, coloured, manufactured and stocked in the UK.

## Warranty:

Newmor offers a five year warranty against manufacturing defects. Full details available on application.

## Samples:

Larger samples are readily available on request.

## Maintenance:

Fully washable and in most cases products can be scrubbed repeatedly to remove any marks without damaging the product itself. Most products are also able to withstand the use of chlorine releasing agent solutions.

Customise this design



**youchoose**<sup>™</sup>

Our Unique Re-Colouration Service

[www.newmor.com](http://www.newmor.com)



**BCFA**  
member



British Product Global Supplier

[www.newmor.com](http://www.newmor.com)

PREMIER COLLECTION